

ThistleBond

www.thistlebond.com

The Engineer's Choice

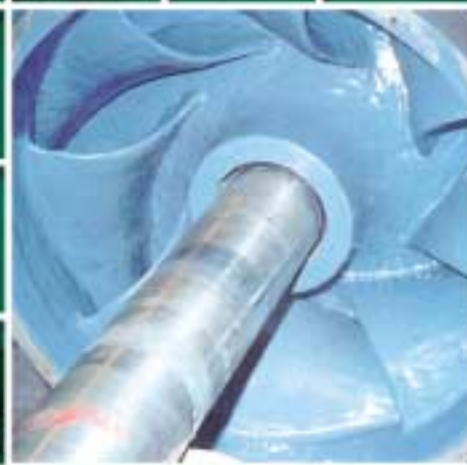
For High Performance Engineering
Repair & Adhesive Products



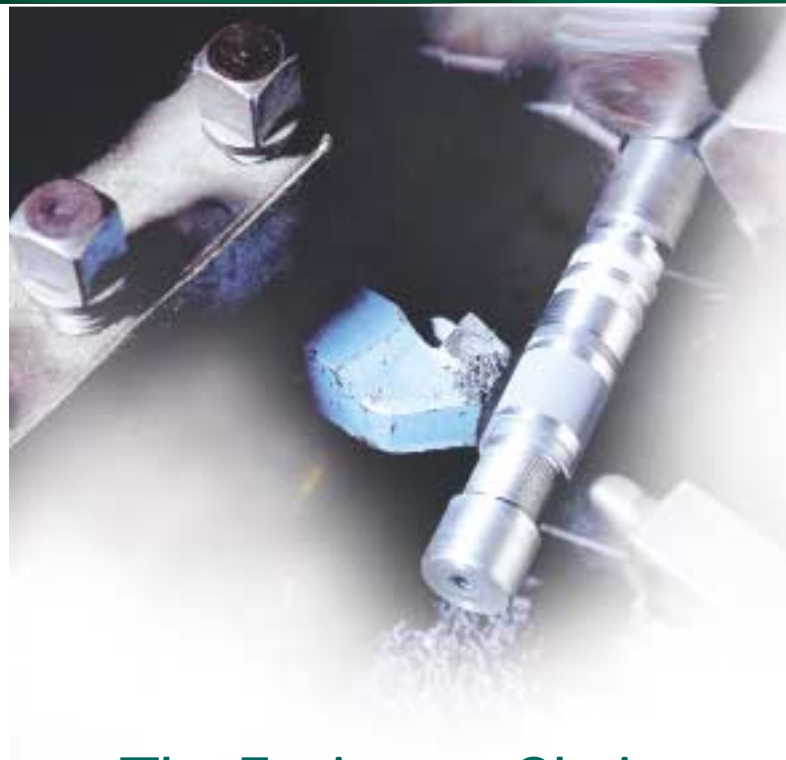
Adhesive Repair



Elastomeric Repair



Metal & Ceramic Repair



The Engineer's Choice

ThistleBond engineering repair and adhesive products are based on the very latest polymer technology.

ThistleBond products are safe and easy-to-use. They can be used anytime, anywhere to repair and maintain machinery and equipment operating in aggressive industrial environments.

Numerous independent tests have shown that the ThistleBond products in this range have no equal anywhere in the world.

Through our international network of agents and distributors, we are able to offer instant, on the spot advice for any engineering repair or maintenance problem - without obligation.

This advice comprises information on mechanical strengths, chemical resistance, recommended surface preparation and full working system recommendations.

Our aim is to provide ThistleBond customers with a range of engineering repair and maintenance products, which are cost-effective, environmentally friendly and offer outstanding performance.

"Committed to research and development, product excellence and customer care"

Adhesive Repair

Elastomeric Repair

Metal & Ceramic Repair

ThistleBond

www.thistlebond.com

ThistleBond

www.thistlebond.com

Engineering Repair & Adhesive Products

Super Metal Repair Systems

Rapid Setting Super Metal Repair Paste TRK 19065 2 x 175g

- Rapid curing
- Excellent mechanical strength
- Easy machining properties
- Ideal for repairs to pipes, tanks, radiators, stripped threads and casings



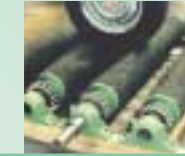
Super Metal Rebuilding System TR 105 1 x 1kg

- Excellent mechanical strength
- Easy machining properties
- Ideal for repairs to pumps, valves, worn shafts and stripped threads
- Allows repair in one easy application



Fluid Super Metal Resurfacing System TRK 110 2 x 1kg

- Fluid grade - allows resurfacing & reforming of damaged metal machinery
- Provides anti-slip surface when used in combination with ThistleBond grip
- Ideal for resurfacing tank bases, casings, metal steps and brake test rollers



PlasSteel Twist Stick TRK19060 1 x 125g

- Fast curing and will set underwater
- Supplied in the form of a stick
- High physical and mechanical strength
- Developed for on-site repairs to castings & worn threads as well as underwater repairs



PlasBronze Twist Stick TRK 19062 1 x 125g

- Fast curing and will set underwater
- Supplied in the form of a stick
- High physical and mechanical strength
- Ideal for repairs to bronze and copper casings



ThistleWrap Pipe Repair Tape TRK 19601 50mm x 1.5m

- Simple-to-use
- Rapid curing & moisture activated
- Seals leaking pipes in minutes
- Also available in:
 - 50mm x 3.6m (TRK 19603)
 - 75mm x 3.6m (TRK 19604)
 - 100mm x 3.6m (TRK 19605)



Plastic Steel TRK19063 1 x 500g

- Simple and easy-to-use
- Ideal for on-site repairs to castings, corroded pumps, valves and shafts
- Optimum resistance to corrosive liquids and gases
- Can be drilled, tapped or filed



Elastomeric Repair Systems

'60' Durometer Fluid Elastomer TR 300 2 x 600g (Includes primer)

- Fluid grade (Shore A Hardness of 60)
- Designed for use with the paste grade to provide a smooth finish
- Ideal for use on impellers, chutes, hoses, conveyor belts & off road tyres
- Fluid grade version available with a Shore A Hardness of 80 (TR 315)



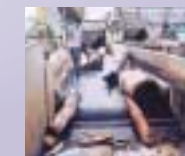
'60' Durometer Paste Elastomer TR 305 2 x 600g (Includes primer)

- Paste grade (Shore A Hardness of 60)
- Developed for the repair of rubber components by trowel/putty knife
- Suitable for use on impellers, chutes, hoses, conveyor belts and off road tyres
- Fluid grade version available with a Shore A Hardness of 80 (TR 320)



'60' Durometer Rapid Paste Elastomer TR 310 10 x 125g (Includes primer)

- Fast curing (Shore A Hardness of 60)
- Developed for the repair of rubber components by trowel/putty knife
- Supplied in a blister pack
- Optimum mechanical strength



Adhesives

NutLock TA 4001 x 50ml

- Simple, safe and easy-to-use
- Designed for the locking and sealing of nuts and bolts
- Offers instant seal
- Thixotropic - does not run or drip



StudLock TA 4051 x 50ml

- Developed to permanently seal threaded assemblies
- Seals out moisture to prevent corrosion
- Resistant to fuels, lubricants & industrial gases
- Resists loosening due to vibration



Permanent Retainer TA 4101 x 50ml

- High strength, fast cure on metal surfaces
- Anerobic seal for slip fitted components and threaded fasteners
- Withstands fatigue under loading and high temperatures



Gasket Maker TA 4151 x 50ml

- Easily applied paste that forms a tough, flexible gasket
- Seals out moisture to prevent corrosion
- Instant low pressure seal
- Ideal for use on fuel & water pumps, pump couplings and split crank cases



MetalFit TA 4201 x 50ml

- Press fit repair compound
- Designed to quickly refit worn parts
- Fast curing
- Seals out moisture to prevent corrosion



PipeSeal TA 4251 x 50ml

- Developed for locking and sealing pipe threads
- Prevents vibration loosening of threaded joints
- Instant, low pressure seal
- Seals out moisture to prevent corrosion



Structural Adhesive TA 4301 x 28ml

- Fast setting
- Developed for structurally bonding a wide range of industrial materials
- Excellent load bearing characteristics
- Thixotropic - does not run or drip



Polyurethane Sealant TA 4351 x 310ml

- Fast curing
- Moisture activated
- Excellent adhesion to most surfaces
- Permanent flexibility



60 Second Epoxy TA 4401 x 28g

- Ultra rapid curing adhesive
- Non-sagging - can be applied on vertical and overhead surfaces
- Ideal for bonding metals, glass, fibre glass and ceramics



Instant Leak Stopper TA 4451 x 15/25mm

- All-in-one, wrap-around tape
- Instantly seals leaks in pipework, even under pressure
- Requires no special tools



SuperGlue TA 4551 x 20g

- Fast curing and solvent free
- Leaves no residue
- Ideal for use on wood, ceramics, plastics, rubber, metals and textiles
- Also available in a 10ml pen (TA 450)



Power Tape TA 4601 x 3.3m

- Self-amalgamating and insulating
- Forms a dielectric sheath to prevent moisture ingress & electrical discharge
- Also suitable for sealing cable ducts and repairing leaking radiator hoses



Water Resistant Sealer TA 4701 x 310ml

- Can be used on damp surfaces
- Cures underwater
- Adheres to most surfaces including zinc, PVC, lead, steel, wood and bricks
- High resistance to ageing



Mega Copper TA 4751 x 310ml

- Developed for use as a high temperature, silicone gasket maker
- Withstands temperatures up to 370°C
- Simple, safe and easy-to-use
- Ideal for use on metals, masonry, glass, ceramic, wood and plastics



A & B Cement TRK 19002 2 x 176g

- Designed for use as a multi-purpose industrial adhesive
- Ideal for difficult adhesion conditions
- Also suitable for crack repairs and sealing
- Also available in 1kg units (TRK 19003)



Ceramic Carbide Repair Systems

Ceramic Carbide Wearing Compound TR 2001 x 2kg

- Developed for use in fluid flow environments
- High level of abrasion and corrosion resistance
- Optimum physical and mechanical strength



Abrasion Resistant Ceramic Carbide Fluid TR 2051 x 1kg (Red or Grey)

- Fluid grade
- Designed for use in fluid flow environments
- High level of abrasion and corrosion resistance
- Optimum physical and mechanical strength



Super Low Friction Efficiency Coating TR 2101 x 1kg (Red or Grey or Blue)

- Developed for use in fluid flow environments
- Optimum resistance to erosion/corrosion
- Low friction to enhance fluid flow
- Ideal for protecting pumps, valves, impellers and waterboxes



Ceramic Carbide 88 TR 2251 x 5kg

- Ceramic-enhanced
- Designed for use as a lining system for fluid flow environments
- Spray applied
- High level of adhesion, abrasion and erosion resistance



Heavy Duty Ceramic Carbide TR 2401 x 5kg

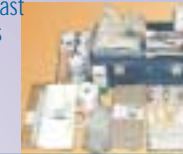
- High abrasion resistance
- Reinforced with ceramic and carbide particles
- Excellent erosion and corrosion resistance
- Ideal for equipment subject to aggressive attack from dry solids and slurries



Engineers' Repair Kits

Engineer's 'A' & 'C' Kits TRK 11000

- Solvent free and epoxy based resin and hardener
- Water activated pipe repair bandages, general purpose adhesive and fast curing metal repair compounds included
- Larger 'C' Kit available (TRK 13000)



ThistleWrap Pipe Repair Kit TRK 19500

- Seals leaking pipes within minutes
- Water activated pipe repair bandages and fast curing metal repair compounds included
- Repairs tolerant of temperatures up to 270°C
- Up to five repairs from one kit



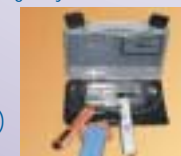
Engineering Kit TRK 790

- Contains versatile, multi-purpose metal repair products and fast curing rubber repair compounds
- Simple, safe and easy-to-use
- Ideal for repairs to cracked and leaking pipe work, stripped threads, pumps and valves



'O' Ring Kit TRK 770

- Cost-effective 'O' Ring replacement
- Innovative kit design allows emergency, in-situ repairs
- Heavy duty nitrile rubber strands for effective long-lasting repairs
- Top Up Kit available (TRK 780)



Adhesive Kit TRK 795

- Simple, safe and easy-to-use
- Supplied in a tough PU case
- Contains temporary and permanent repair products and adhesives
- Used across a wide range of industrial markets



“Committed to research and development, product excellence and customer care”



Telephone: 01609 780170
 Facsimile: 01609 780438
 Facsimile: 01609 783762 (Sales)
 Facsimile: 01609 788718 (Technical)
 E mail: info@thistlebond.com
 Web site: www.thistlebond.com

AVAILABLE FROM:



TBB01 REV 2 - 2003

The products highlighted in this brochure are just part of the ThistleBond industrial and marine maintenance range.

The full range includes:

- Super Metal Repair Systems
- Ceramic Carbide Repair Systems
- Elastomeric Repair Systems
- Adhesives
- Laminates
- Topside & Below Waterline Repair Systems

- Concrete Repair Systems
- Safety Surfacing Systems
- Chemical Protection Systems
- Corrosion Protection Systems

ThistleBond

www.thistlebond.com

ThistleBond, Division of E.Wood Ltd,
Standard Way, Northallerton,
North Yorkshire, DL6 2XA, United Kingdom.

Telephone: 01609 780170
Facsimile: 01609 780438 & 783762
(Sales)
Facsimile: 01609 788718 (Technical)
E mail: info@thistlebond.com
Web site: www.thistlebond.com

© Copyright Reserved E.Wood Ltd 2003

"Committed to research and development, product excellence and customer care"